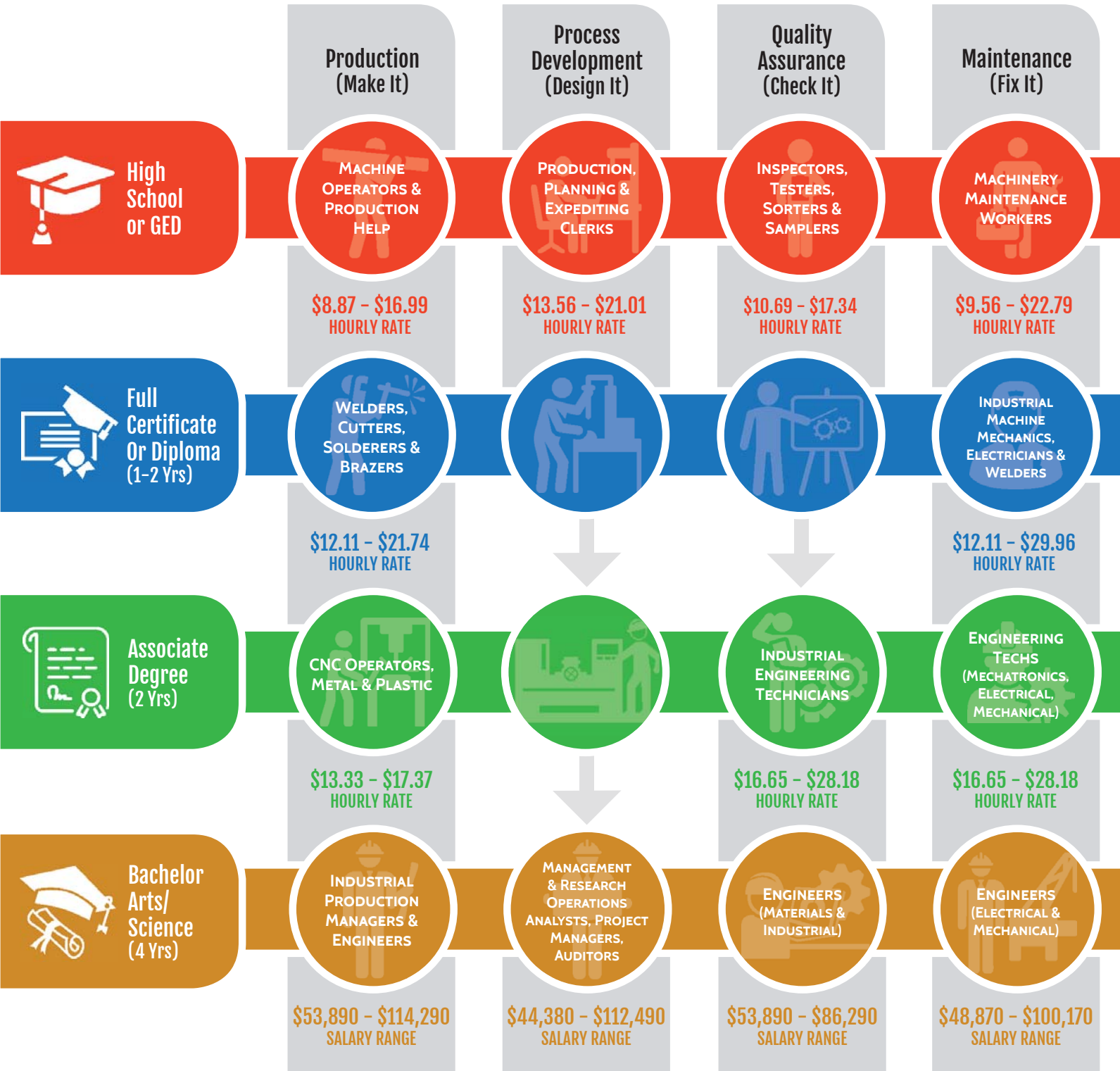


ADVANCED MANUFACTURING CAREER PATHS



*Wages are an average across the Alexander, Burke, Caldwell and Catawba workforce area. A potential to earn more is available in most industries. **Every job title is not represented.





Contact Information for Advanced Manufacturing Programs

Caldwell Community College & Technical Institute
All Programs: 828-726-2382

Western Piedmont Community College
Certificate/Diploma Programs: 828-448-3121
Associate's Degree Programs: 828-448-3563

Catawba Valley Community College
Certificate/Diploma Programs: 828-327-7000, ext. 4294
Associate's Degree Programs: 828-327-7000, ext. 4216

NC Center for Engineering Technologies
Serves as a conduit to baccalaureate education,
delivered by the University of North Carolina system
schools: 828-328-6183

NCWorks Career Center

Catawba	(828) 466-5535
Caldwell	(828) 759-4680
Burke	(828) 438-6161
Alexander	(828) 632-4631

*See a career advisor at your local NCWorks Career Center for possible scholarship opportunities. www.westernpiedmontworks.org

